

Io Io^{LD} Io^{LA}



Simple, Elegant, Revolutionary

The Io products are the only uncompressed over-firewire devices available for Final Cut Pro HD™

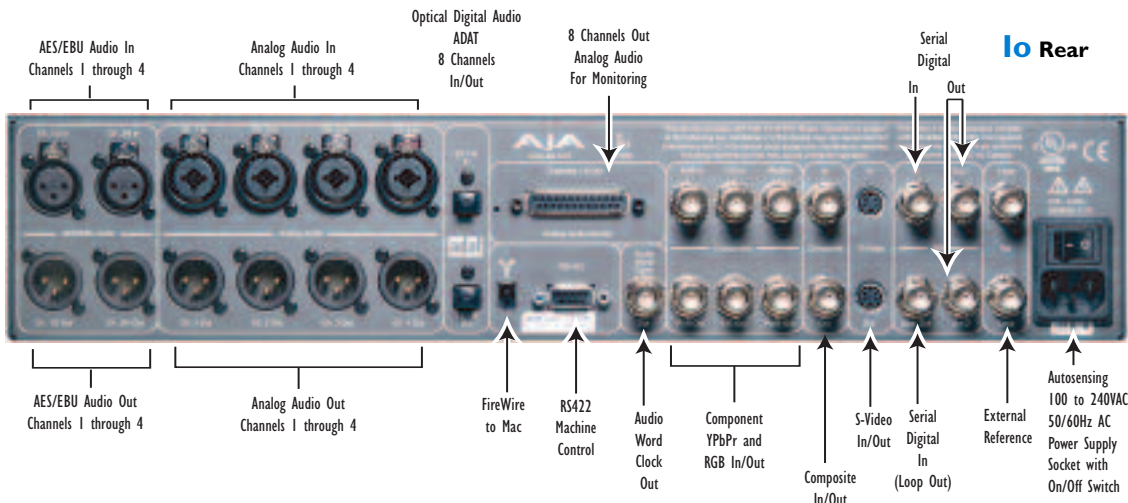
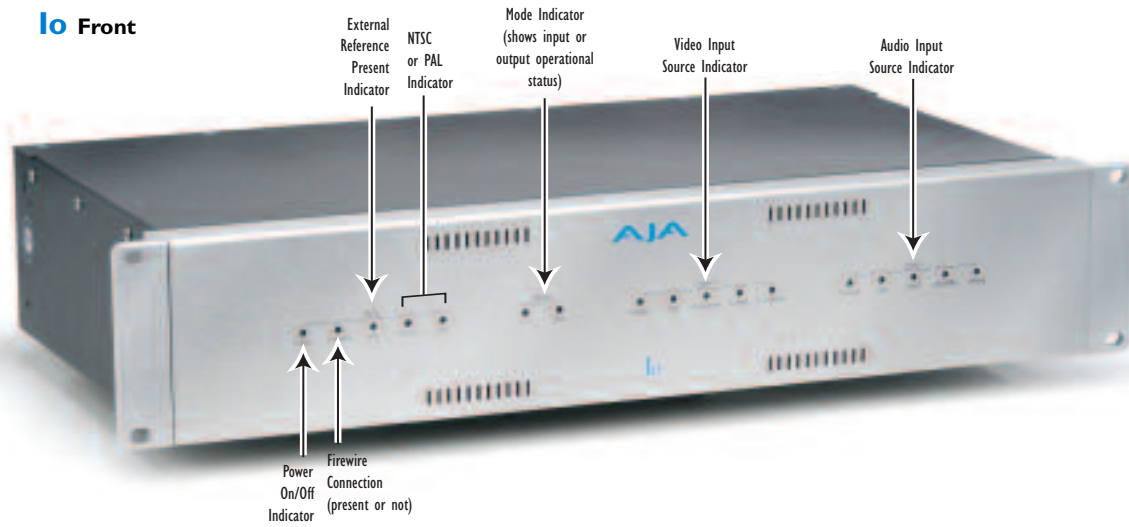


AJA Video's Io products are the effortless, plug-in solution to working with Final Cut Pro HD on a Macintosh G4, G5, or PowerBook. With a single FireWire connection, any Io links to the Power Mac, providing professional audio and video I/O, as well as connectivity to VTRs, Genlock, and integrated with OSX drivers. Quite simply, Io products make building a Mac-based video finishing system a piece of cake.

Offering incomparable 10-bit uncompressed video and multi-channel audio, the Io is a virtual, versatile powerhouse. Just tap into its flexibility, and you can configure a Power Mac as a professional editing suite, corporate/industrial video center, or high-powered desktop video setup — and just about anything in-between. Both analog and digital ports are offered, allowing connection to just about every kind of video/audio peripheral — from the most current digital decks to old legacy devices.



Io Front



Io Software

All of AJA's Io products have been co-developed with Apple for use with Final Cut Pro HD to deliver powerful video/audio capture, editing, and video production—all in a single, integrated system. Each member of the family comes with special Final Cut Pro presets to facilitate ease of use. The Io driver also provides RGB support, allowing for the direct video output of applications such as Adobe After Effects,™ Discreet Combustion™ and Apple Motion.™

New Io Control Panel

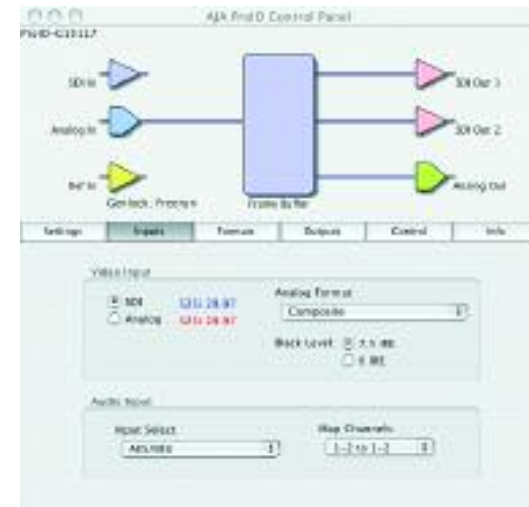
The Io's bells and whistles have recently been enhanced by a stand-alone Control Panel software application. Capable of running on both an Apple PowerMac and PowerBook, it lets you manage the Io as an "everything in/everything out" frame synchronizer. Now, the Io can perform as a stand-alone A/D converter, D/A converter, SDI audio mux/de-muxer, and more.

Offering a block diagram view of how the Io is currently configured—including

source selection—the new Control Panel provides simple, at-a-glance configuration and control capabilities. Flexible software controls allow you to select input sources, choose formats, color correct, and save settings in up to 10 unique presets.

These presets can be recalled at a later time to instantly reconfigure the Io. Once a preset is recalled, the Io can be disconnected from the Mac's FireWire port and truly operate as a stand-alone converter. When the Io is powered off and back on, it will remember the last preset chosen from the Control Panel. For the ultimate in flexibility, you can even have multiple Io's connected to the FireWire bus on a Mac, and use the Control Panel to select the one you manage.

When Final Cut Pro is running, the Control Panel steps aside and automatically lets it take over the Io, resuming control again when Final Cut quits. The Control Panel provides a powerful addition to Final Cut's capabilities with features such as proc amp and output timing controls.



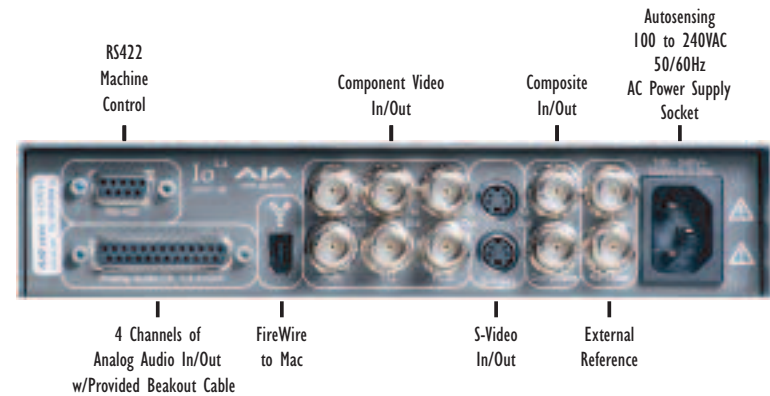
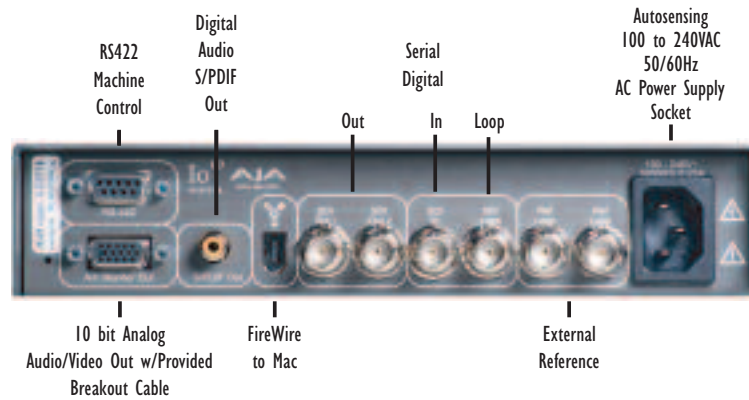
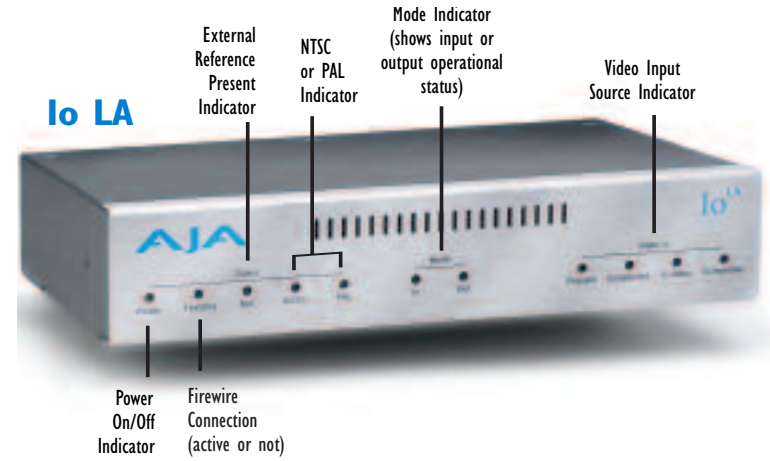
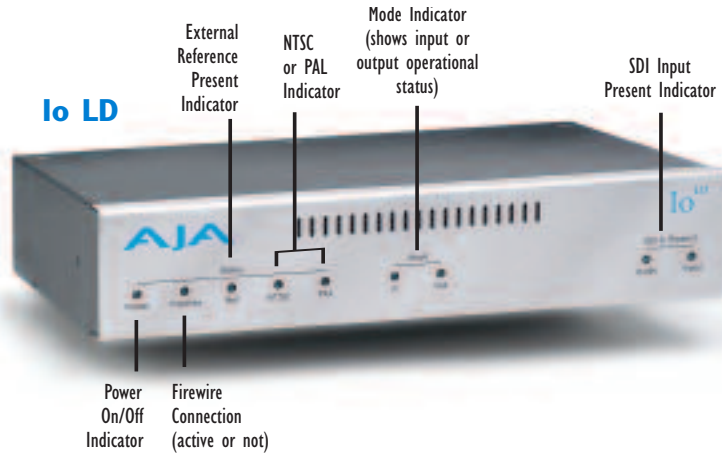
Io Control Panel Screen.

Cost-Efficient Option

If you're in the market for a smaller and lower-cost version of AJA's award-winning Io, take a look at Io LD and LA:

Io LD—Designed to work with SDI digital systems, it supports 10-bit uncompressed SDI video and embedded audio I/O, and offers 10-bit analog video, with 2 Ch balanced monitoring outputs.

Io LA—Created for analog component, composite, and S-video systems, it affords the highest quality 10-bit video available on all analog inputs and outputs and 4 Ch balanced audio I/O. As stylish-looking as the bigger guys, Io LD and Io LA can do their stuff when placed directly on a desktop, and can also be rack-mounted through the use of an optional kit.



Whether you're on a desktop or laptop... a G4 or G5... AJA's Io products provide the simple, seamless solution to working with Final Cut Pro.



Io Specifications

Video Input

Digital:
8 or 10-bit SDI, SMPTE-259

Analog:

Composite/S-Video: NTSC, NTSCJ, PAL
10-bit A/D, 2x oversampling
3 line adaptive comb filter decoding
+/- .25 db to 5.0 MHz Y Frequency Response
+/- .25 db to 1 MHz C Frequency Response
.5% 2T pulse response
< 1.5% Diff Phase
< 1.5% Diff Gain

Component: SMPTE/EBU N10, Betacam 525 line, Betacam 525J, RGB

10-bit A/D, 2x oversampling
+/- .25 db to 5.5 MHz Y Frequency Response
+/- .25 db to 2.5 MHz C Frequency Response
.5% 2T pulse response
< 2 ns Y/C delay inequity

Video Output

Digital:
8 or 10-bit SDI, SMPTE-259

Analog:

Composite/S Video: NTSC, NTSCJ, PAL
12-bit D/A, 8x oversampling
+/- .2 db to 5 MHz Y Frequency Response
+/- .2 db to 1 MHz C Frequency Response
.5% 2T pulse response
< 1% Diff Phase
< 1% Diff Gain

Component: SMPTE/EBU N10, Betacam 525 line, Betacam 525J, RGB

12-bit D/A, 8x oversampling
+/- .2 db to 5.5 MHz Y Frequency Response
+/- .2 db to 2.5 MHz C Frequency Response
.5% 2T pulse response
< 1 ns Y/C delay inequity

Audio Input

Digital:
24-bit AES/EBU, 48KHz sample rate
Synchronous or Non-synchronous
(Internal sample rate conversion)
24-bit SMPTE-259 SDI embedded audio, 8 ch, 48kHz synchronous
ADAT, 8 channel optical, Synchronous or Non-synchronous, 24-bit 48 KHz
SPDIF, 2 channel optical, Synchronous or Non-synchronous, 24-bit 48 KHz

Analog:

Balanced/Unbalanced input
+24dbu Full Scale Digital
24-bit A/D, 48 KHz sample rate
+/- 0.2db 20 to 20 KHz Frequency Response

Audio Output

Digital:
24-bit AES/EBU, 48 KHz sample rate
24-bit SMPTE-259 SDI embedded audio, 8 ch, 48 KHz synchronous
ADAT, 8 channel optical, 24-bit 48 KHz
SPDIF, 2 channel optical, 24-bit 48 KHz

Analog:

Balanced output (XLR and 25 pin D)
+24dbu Full Scale Digital (0dbFS)
24-bit D/A, 48 KHz sample rate
+/- 0.2db 20 to 20 KHz Frequency Response

Reference Input

Analog Color Black
Non terminating, Looping, 75 ohm

AudioWord Clock

Audio word clock, 48 kHz, 3V TTL, 75 ohm

Machine Control

RS-422, Sony 9 pin protocol

FireWire

IEEE-1394a, 400Mb/s, 6 pin

Physical

Width: 17.25" (43.8 cm)
Depth: 11" (28 cm)
Height: 2RU, 3.5" (8.9cm")
Weight: 11 Lbs (5 kg)

Power

Voltage: 100-240VAC,
Power Consumption: 18 watts (20 Watts maximum)

Regulatory

UL, FCC Class A, CE

IoLA & IoLD Specifications

Video Input

IoLD: 8 or 10-bit SDI, SMPTE-259

IoLA Analog:

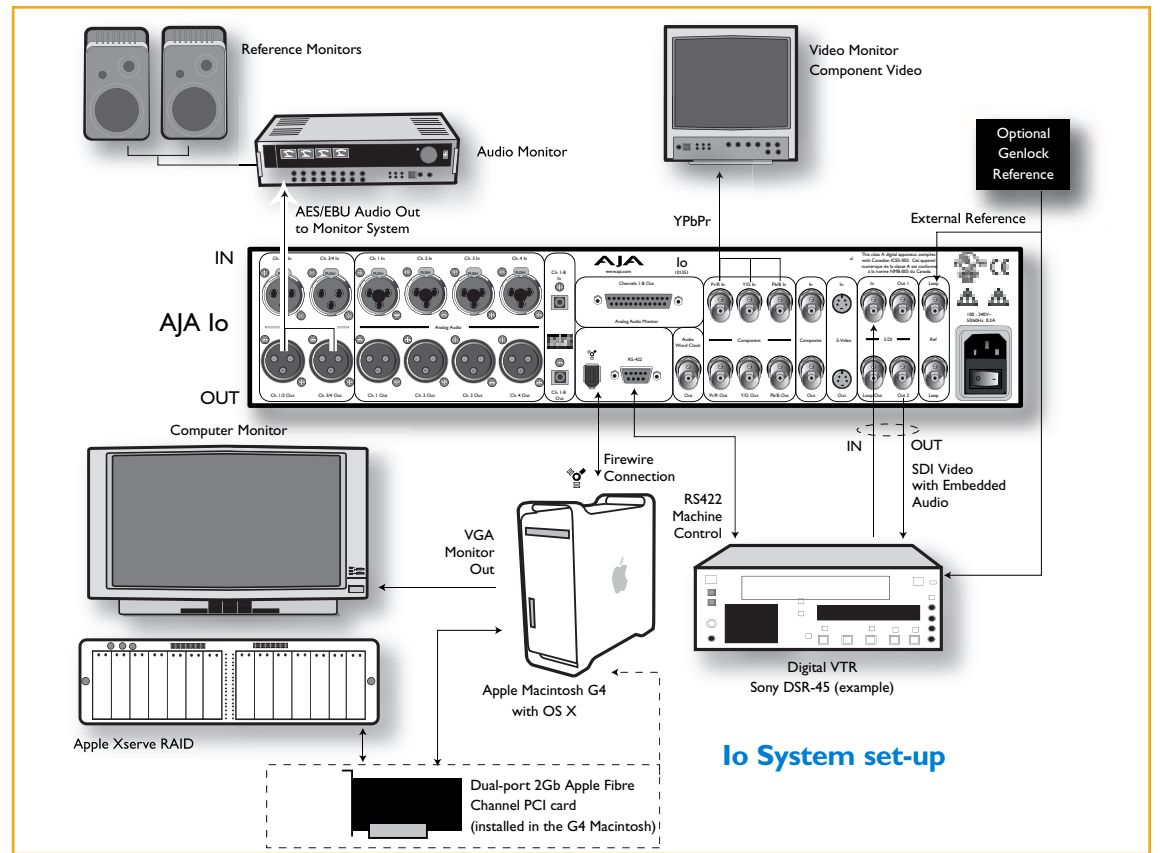
Composite/S-Video: NTSC, NTSCJ, PAL
10-bit A/D, 2x oversampling
3 line adaptive comb filter decoding
+/- .25 db to 5.0 MHz Y Frequency Response
+/- .25 db to 1 MHz C Frequency Response
.5% 2T pulse response
< 1.5% Diff Phase
< 1.5% Diff Gain
Component: SMPTE/EBU N10, Betacam 525 line, Betacam 525J, RGB
10-bit A/D, 2x oversampling
+/- .25 db to 5.5 MHz Y Frequency Response
+/- .25 db to 2.5 MHz C Frequency Response
.5% 2T pulse response
< 2 ns Y/C delay inequity

Video Output

IoLD:
8 or 10-bit SDI, SMPTE-259

IoLD, IoLA: (breakout cable on IoLD)

Composite/S Video: NTSC, NTSCJ, PAL
12-bit D/A, 8x oversampling
+/- .2 db to 5 MHz Y Frequency Response
+/- .2 db to 1 MHz C Frequency Response
.5% 2T pulse response
< 1% Diff Phase
< 1% Diff Gain



Component: SMPTE/EBU N10, Betacam 525 line, Betacam 525J, RGB
12-bit D/A, 8x oversampling
+/- .2 db to 5.5 MHz Y Frequency Response
+/- .2 db to 2.5 MHz C Frequency Response
.5% 2T pulse response
< 1 ns Y/C delay inequity

Audio Input

IoLD:
24-bit SMPTE-259 SDI embedded audio, 8 ch, 48kHz synchronous

IoLA:

4 Ch Balanced input (XLR breakout cable)
+24dbu Full Scale Digital
24-bit A/D, 48 KHz sample rate
+/- 0.2db 20 to 20 KHz Frequency Response

Audio Output

IoLD:
24-bit SMPTE-259 SDI embedded audio, 8 ch, 48 KHz synchronous
SPDIF, 2-channel, RCA connector, 24-bit 48 KHz
2 Ch Balanced output (XLR breakout cable)

IoLA:

4 Ch Balanced output (XLR breakout cable)

+24dbu Full Scale Digital
24-bit D/A, 48 KHz sample rate
+/- 0.2db 20 to 20 KHz Frequency Response

Reference Input

Analog Color Black
Non terminating, Looping, 75 ohm

Machine Control

RS-422, Sony 9 pin protocol

FireWire

IEEE-1394a, 400Mb/s, 6 pin

Physical (applies to IoLA or IoLD)

Width: 8.5" (21.59 cm)
Depth: 10.75" (27.30 cm)
Height: 1RU, 1.75" (4.445 cm)
Weight: 4 Lbs (1.814 kg)

Power

Voltage: 100-240VAC,
Power Consumption: IoLA 10 Watts, IoLD 8 Watts

Regulatory

UL, FCC Class A, CE

Io System set-up

Incredible 3 Year Warranty

AJA Video warrants that KONA products will be free from defects in materials and workmanship for a period of three years from the date of purchase.



AJA Video Systems Inc.
P.O. Box 1033 • Grass Valley, California 95945
800.251.4224 • 530.274.2048 • www.aja.com